



THE CENTER FOR ECOLOGICAL-
NOOSPHERE STUDIES NAS RA

<http://cens.am>

Modernization of Environment Protection Studies Programmes for Armenia and Georgia



Co-funded by the
Erasmus+ Programme
of the European Union

Viterbo-Lisbon,
30th March – 7th April, 2019

THE CENTER FOR ECOLOGICAL-NOOSPHERE STUDIES

LIBRARY

**EXECUTIVE
PERSONNEL**

DIRECTOR

**SCIENTIFIC
BOARD**

**NONGOVERNMENTAL
ORGANIZATIONS:**

- Young scientists board
- Trade Union Committee

Educational Department

- Environmental Protection and Nature Management Chair of the International Scientific-Educational Center of NAS RA
- UNESCO Chair on «Education for Sustainable Development»

- MS course
- PhD course
- Trainings

**Environmental Geochemistry
Department**

**Bioenergy and Fodder
Quality Department**

**GIS and Remote Sensing
Department**

Radioecology Department

**TEMPORARY
WORK TEAMS**

- Grants
- Agreements
- Target

**INFORMATIONAL
ANALYTICAL CENTER
FOR RISK ASSESSMENT
OF FOOD CHAIN**

ANALYTICAL LABORATORY



The Center for Ecological-Noosphere Studies NAS RA
The Informational - Analytical Center
For Risk Assessment of Food Chain

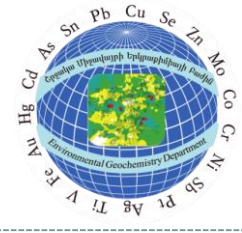


Main activities

- Biotechnological risks
- Determination of environmental contaminants:
heavy metals, pesticides in food stuff
- Risk assessment of adulteration
- Implementation of localization of accepted
risk-based quality management systems (HACCP, GAP, GHP, GMP)
- Total dietary studies (TDS)



The Center for Ecological-Noosphere Studies NAS RA
Environmental Geochemistry Department



Main activities

- Eco-geochemical assessment
- Geochemical survey and mapping
- Environmental and health risk assessment
- Revealing risk groups in the population
- Hydrochemistry, surface water quality assessment
- Environmental geochemistry and food safety

URBAN

MINING

AGRICULTURAL

Potentially
toxic
elements,
Pesticides
...
in soil, water,
dust, bio
substrates etc.

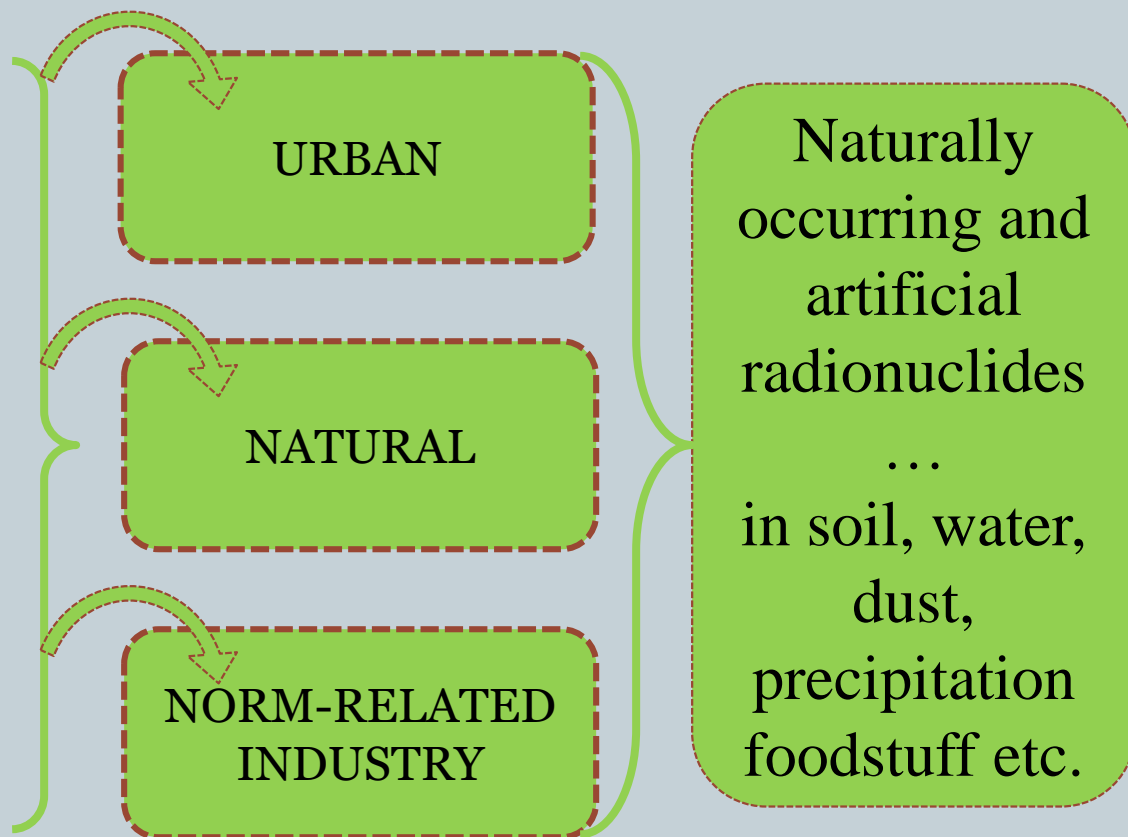


The Center for Ecological-Noosphere Studies NAS RA
Radioecology Department



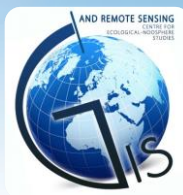
Main activities

- Radioecological monitoring
- Radionuclide migration in the environment
- Radon monitoring
- Radiological hazard and risk assessment
- Detection of naturally occurring radionuclides in construction materials, foodstuff, mineral water, etc.
- Nuclear forensics





Center for Ecological-Noosphere Studies NAS of Armenia



GIS and Remote Sensing Department

In situ and remote observation systems of the main environmental compartments (water, soil and plants).

Environment and food chains risk assessment

Developing Earth observation and information systems for site specific decision – making

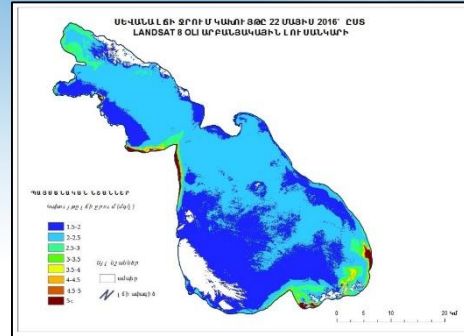
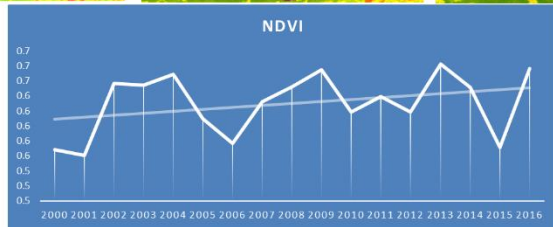
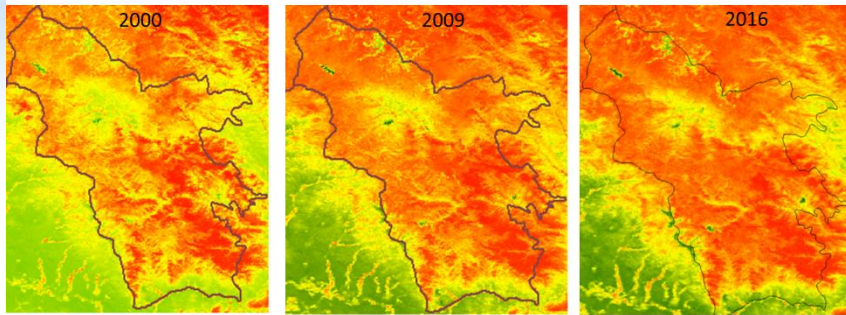
Detection and prediction of land-use changes.

Improvement of the grasslands environment and quality of feedstuff.

Assessing and monitoring the impact of climate change on the productivity of ecosystems



Desktop GIS and Remote Sensing Analysis



National and regional experience through research partnership and international cooperation.



FP7 EcoArm2ERA

EU Cooperation Capacity Building of Center for Ecological-Noosphere Studies of National Academy of Sciences of Armenia: Towards Armenia's integration into the ERA



to reinforce the international research cooperation between CENS and ERA.

For this purpose

Sustainable development strategy was defined and promoted for CENS focusing on the overall improvement of the institution's capacities, visibility, and competitiveness.

- University College Dublin, National University of Ireland (Ireland)
- University of Geneva, Institute for Environmental Sciences (Switzerland)
- GIRAF PM Services GmbH (Germany)



Deploying ARmenian distributed Processing capacities for Environmental GEOspatial data (ARPEGEO)

New Master Course “SDI and Data Management”

To build a state-of-the-art Spatial Data Infrastructure (SDI) in order to efficiently manage and distribute environmental data and their associated metadata.





The Center for Ecological-Noosphere Studies NAS RA



*<http://cens.am/>
info@cens.am*

*Thanks you for the
Attention*

